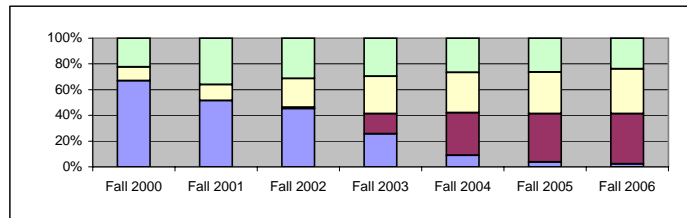


University of North Alabama

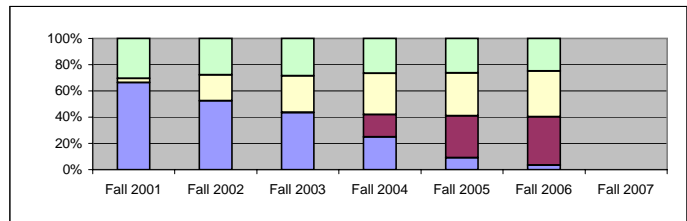
Freshman Cohort Retention, Graduation, and Transfer Rates

Fall 1999 to Fall 2006

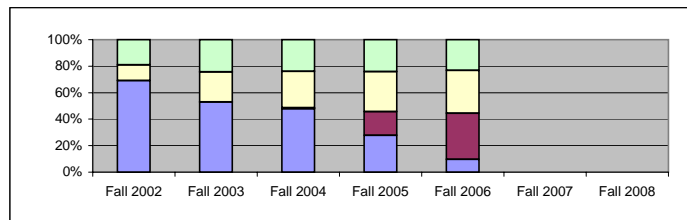
FALL 1999 FRESHMEN N=809	Fall 2000	Fall 2001	Fall 2002	Fall 2003	Fall 2004	Fall 2005	Fall 2006
Enrolled	542	417	367	207	72	30	18
Have Graduated	0	0	8	127	268	304	317
Have Transferred	85	100	181	235	254	262	280
Not Enrolled	182	292	253	240	215	213	194
Retention Rate	67.0%	51.5%	45.4%	25.6%	8.9%	3.7%	2.2%
Graduation Rate	0.0%	0.0%	1.0%	15.7%	33.1%	37.6%	39.2%
Transfer Rate	10.5%	12.4%	22.4%	29.0%	31.4%	32.4%	34.6%
*Grad. Rate w/o Transfers	0.0%	0.0%	1.3%	22.1%	48.3%	55.6%	59.9%
Not Enrolled Rate	22.5%	36.1%	31.3%	29.7%	26.6%	26.3%	24.0%



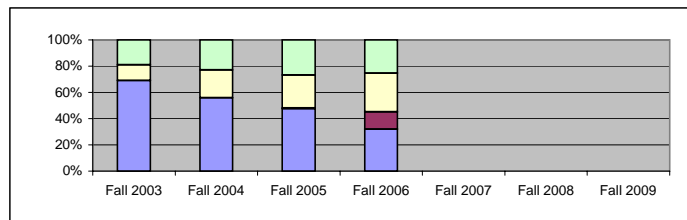
FALL 2000 FRESHMEN N=841	Fall 2001	Fall 2002	Fall 2003	Fall 2004	Fall 2005	Fall 2006	Fall 2007
Enrolled	557	440	365	210	76	29	
Have Graduated	0	0	3	143	268	310	
Have Transferred	27	168	234	265	276	293	
Not Enrolled	257	233	239	223	221	209	
Retention Rate	58.2%	52.3%	43.4%	25.0%	9.0%	3.4%	
Graduation Rate	0.0%	0.0%	0.4%	17.0%	31.9%	36.9%	
Transfer Rate	3.2%	20.0%	27.8%	31.5%	32.8%	34.6%	
*Grad. Rate w/o Transfers	0.0%	0.0%	0.5%	24.8%	47.4%	56.6%	
Not Enrolled Rate	30.6%	27.7%	28.4%	26.5%	26.3%	24.9%	



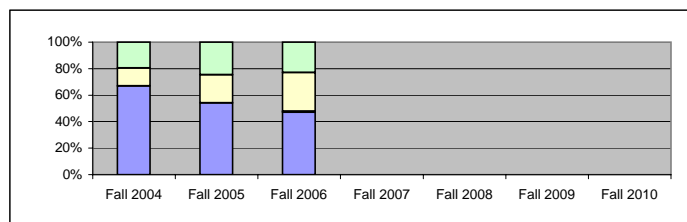
FALL 2001 FRESHMEN N=829	Fall 2002	Fall 2003	Fall 2004	Fall 2005	Fall 2006	Fall 2007	Fall 2008
Enrolled	572	439	396	231	81		
Have Graduated	0	0	6	147	287		
Have Transferred	99	187	228	250	268		
Not Enrolled	158	203	199	201	193		
Retention Rate	69.0%	53.0%	47.8%	27.9%	9.8%		
Graduation Rate	0.0%	0.0%	0.7%	17.7%	34.6%		
Transfer Rate	11.9%	22.6%	27.5%	30.2%	32.3%		
*Grad. Rate w/o Transfers	0.0%	0.0%	1.0%	25.4%	51.2%		
Not Enrolled Rate	19.1%	24.5%	24.0%	24.2%	23.3%		



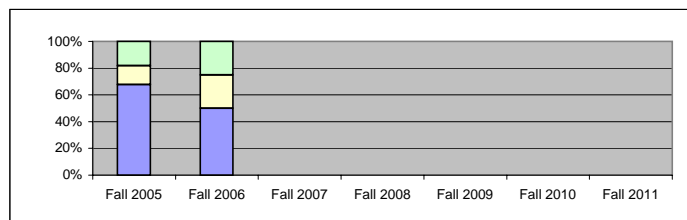
FALL 2002 FRESHMEN N=790	Fall 2003	Fall 2004	Fall 2005	Fall 2006	Fall 2007	Fall 2008	Fall 2009
Enrolled	546	441	375	252			
Have Graduated	0	0	4	104			
Have Transferred	94	168	199	234			
Not Enrolled	150	181	212	200			
Retention Rate	69.1%	55.8%	47.5%	31.9%			
Graduation Rate	0.0%	0.0%	0.5%	13.2%			
Transfer Rate	11.9%	21.3%	25.2%	29.6%			
*Grad. Rate w/o Transfers	0.0%	0.0%	0.7%	18.7%			
Not Enrolled Rate	19.0%	22.9%	26.8%	25.3%			



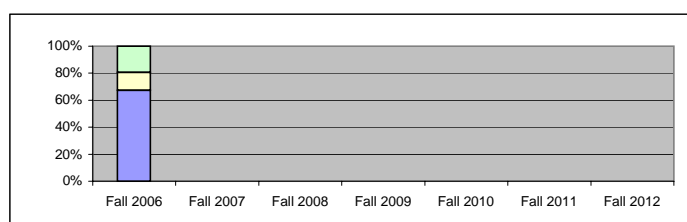
FALL 2003 FRESHMEN N=803	Fall 2004	Fall 2005	Fall 2006	Fall 2007	Fall 2008	Fall 2009	Fall 2010
Enrolled	538	434	379				
Have Graduated	0	0	6				
Have Transferred	107	171	234				
Not Enrolled	158	198	184				
Retention Rate	67.0%	54.0%	47.2%				
Graduation Rate	0.0%	0.0%	0.7%				
Transfer Rate	13.3%	21.3%	29.1%				
*Grad. Rate w/o Transfers	0.0%	0.0%	1.1%				
Not Enrolled Rate	19.7%	24.7%	22.9%				



FALL 2004 FRESHMEN N=856	Fall 2005	Fall 2006	Fall 2007	Fall 2008	Fall 2009	Fall 2010	Fall 2011
Enrolled	580	451					
Have Graduated	0	1					
Have Transferred	121	224					
Not Enrolled	155	227					
Retention Rate	67.8%	49.9%					
Graduation Rate	0.0%	0.1%					
Transfer Rate	14.1%	24.8%					
*Grad. Rate w/o Transfers	0.0%	0.1%					
Not Enrolled Rate	18.1%	25.1%					



FALL 2005 FRESHMEN N=982	Fall 2006	Fall 2007	Fall 2008	Fall 2009	Fall 2010	Fall 2011	Fall 2012
Enrolled	662						
Have Graduated	0						
Have Transferred	129						
Not Enrolled	191						
Retention Rate	67.4%						
Graduation Rate	0.0%						
Transfer Rate	13.1%						
*Grad. Rate w/o Transfers	0.0%						
Not Enrolled Rate	19.5%						



*Grad. Rate w/o Transfers is calculated using the cumulative graduates through that semester divided by the number in the original cohort with transfer-outs removed.